

Hondavert S300. SManager and CROME mode.

WARNING! Before you start. Please understand ONE simple thing. **Hondavert S300** is **NOT a fake copy/counterfit/replica** of Hondata S300 Board. It is own development Board with **COMPATIBILITY** of Hondata SManager software. Yes it's has full compatibility with Hondata S300 V2 hardware, but she has other functionality that Hondata does not (for example — our board work as an OSTRICH emulator + CROME Datalogger via ONE USB port. Yes, You can also use our board as a standalone OSTRICH for nonHonda ECU).

Understanding this simple thing, we come to the understanding that our board is NOT Compatible with new versions of Hondata SManager software from Hondata's web site.

To make our board compatible with new versions of Hondata's software, we will have to crack the Hondata S300 board, but we respect intellectual property and we will not do it.

So please use the software ONLY from this CD or from www.holyguard.ru site. All versions on this sources are TESTED and STABLE.

With best regards, Hondavert TEAM!

Driver selection and installation

Installation must be done with **FIRST** board connection

First, a little theory. Hondata provides bundled drivers for working with SManager, but they do not develop any compatibility for working with other programs like CROME.

As a result we have two types of drivers for Hondavert S300:

1. Driver «**SManager**» - works **ONLY** with SManager. Installed automatically when you installing SManager 2.2.8.
2. Driver «**VitaProg**» - universal driver that works with both SManager and CROME and similar programs using the OSTRICH protocol and separate protocols for datalog.

Drivers are **NOT COMPATIBLE** with each other.

You must choose driver type before installing SManager or CROME and before connecting S300 board for the first time which programs you will use in the future. Once you have installed one of the drivers on a «clean» system, you make a choice until you reinstall windows.

If you want to work only with **SManager**, as most users do, because this is the most functional, stable and user friendly program, then just install SManager 2.2.8 according to our instructions and rely on the installation wizard, it will do everything for you. You do not need to read anymore. Go tune!

If you want to use **CROME** and **SManager**, then download the «VitaProg» driver from www.holyguard.rus/300_en.html and read on.

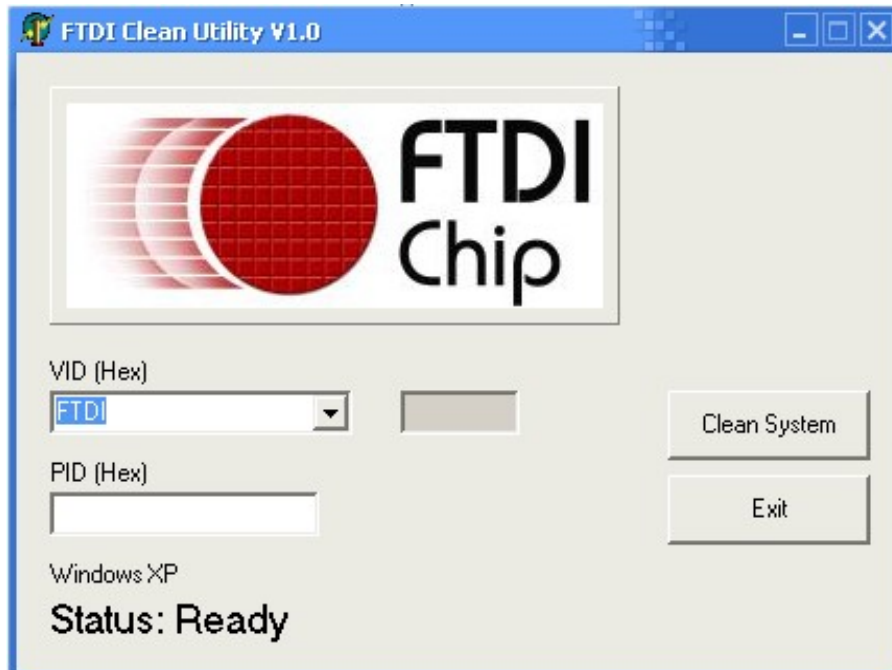
«VitaProg» Driver installation

S300 Board must be located in the ECU

Installation should be on a «clean» OS Windows.

If SManager drivers are already installed on your system - you need to clean OS Windows from installed drivers.

We have FTCCleaner utility for this purposes. Download it from www.holyguard.rus/300_en.html, unzip, run FTCClean.exe and follow the program instructions.

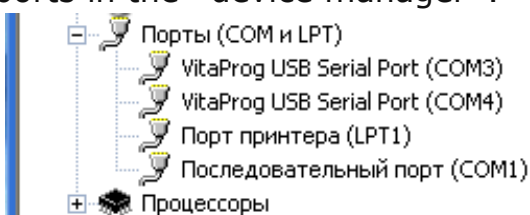


ATTENTION! WE DO NOT GUARANTEE 100% working of your OS Windows after using this utility, but practice shows that it works correctly at 95%.

Installing "SManager" bundled driver after using this utility will be IMPOSSIBLE, only "VitaProg" universal driver.

But if you do it, you know what you want ;)

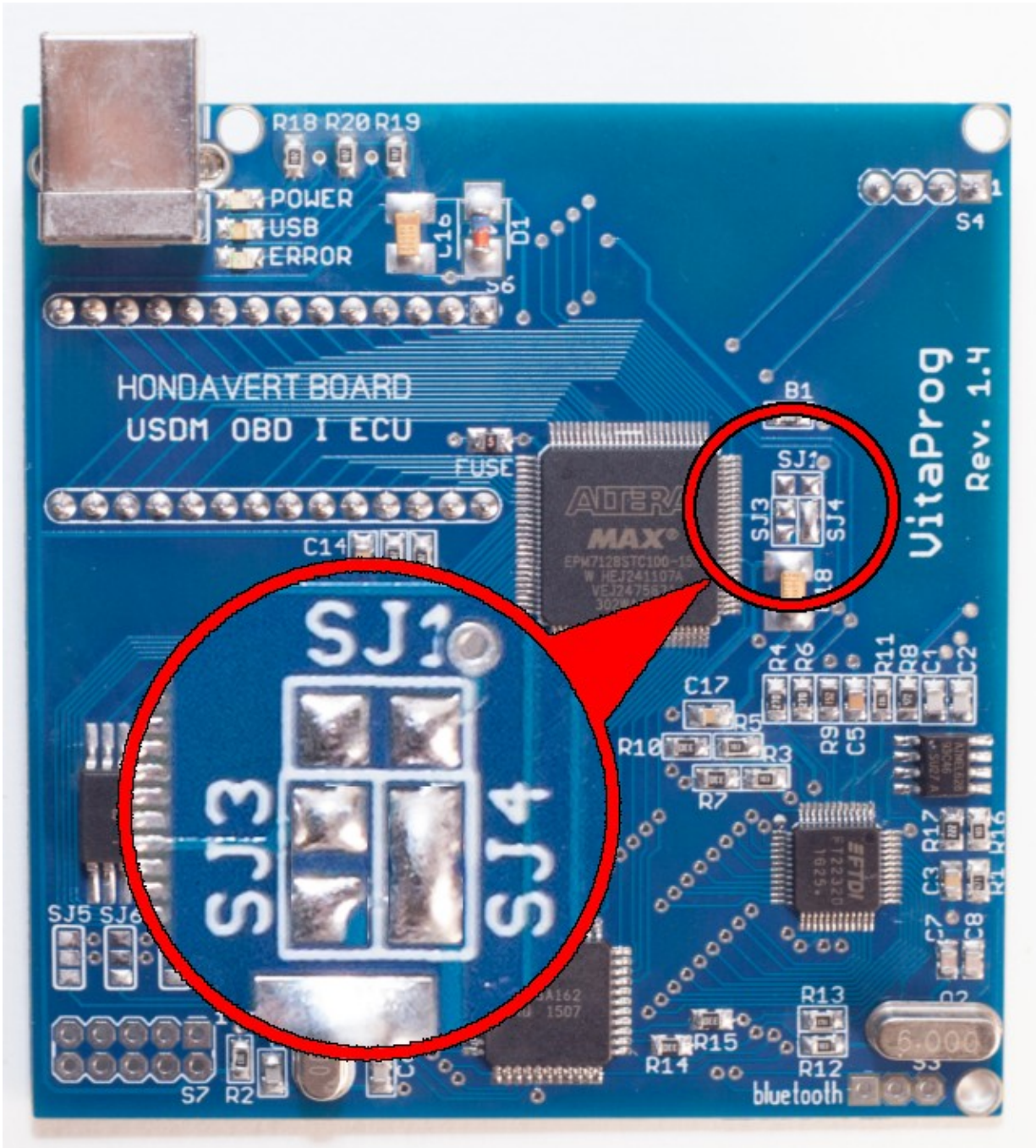
1. Supply power to the ECU or turn ignition ON, if the ECU is installed on the vehicle.
2. Connect the board to the computer via USB
3. Wait a few seconds. When OS Windows ask to install drivers, select «Manual driver installation» and browse to the folder with the "VitaProg" drivers. In total there will be 4 requests to which you should select «Manual driver installation» and browse to the folder with the "VitaProg" drivers.
4. When the installation is completed correctly, you will see two virtual COM ports in the «device manager».



Switch S300 to CROME mode

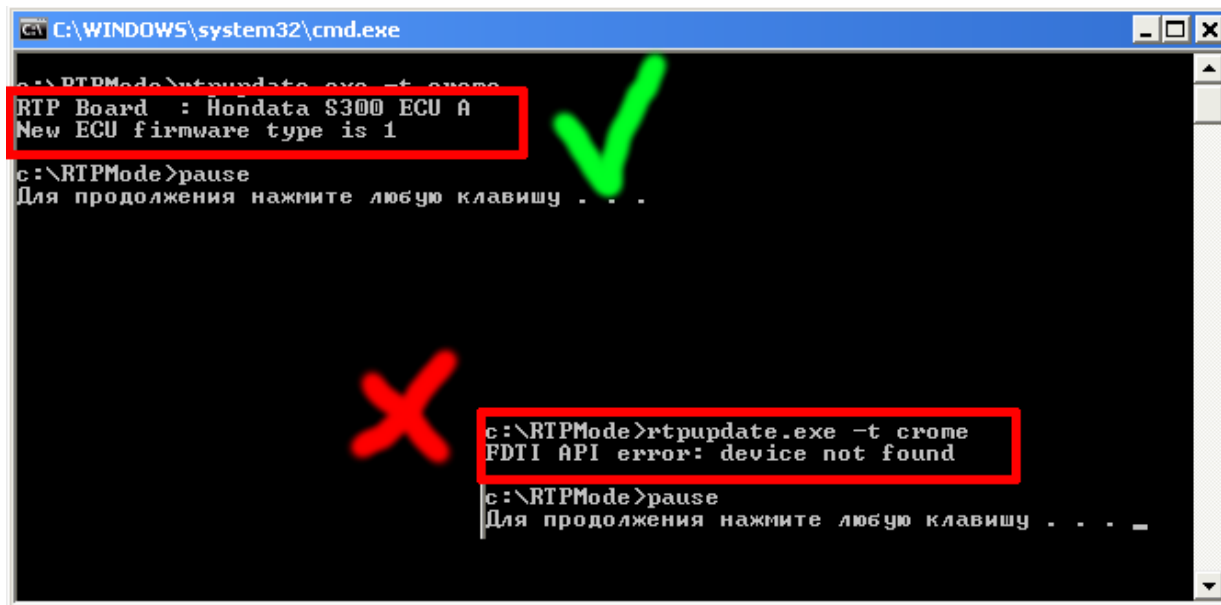
S300 Board must be located in the ECU

1. Disconnect power from the ECU. Disconnect USB cable from S300. Solder jumper SJ4 instead of SJ3 as shown on the picture (you can temporarily remove the board from ECU at this stage for convenience)



CHECK YOURSELF. SJ4 soldered! SJ1, SJ3 desoldered!

2. Close SManager and CROME, if they are running. Supply power to the ECU or turn ignition ON, if the ECU is installed on the vehicle.
3. Connect S300 board to the computer via USB. Waiting for 10 seconds to activate the drivers!
4. Download the RTPMode utility from www.holyguard.rus/300_en.html
5. Unpack it and run SetCROME.bat.



```
C:\WINDOWS\system32\cmd.exe
c:\RTPMode>rtpupdate.exe -t crome
RTP Board : Hondata S300 ECU A
New ECU firmware type is 1
c:\RTPMode>pause
Для продолжения нажмите любую клавишу . . .

c:\RTPMode>rtpupdate.exe -t crome
FDTI API error: device not found
c:\RTPMode>pause
Для продолжения нажмите любую клавишу . . .
```

CAREFULLY check that the board is determined as on the picture. If not, you have a problem with the USB cable or jumpers soldered incorrectly!

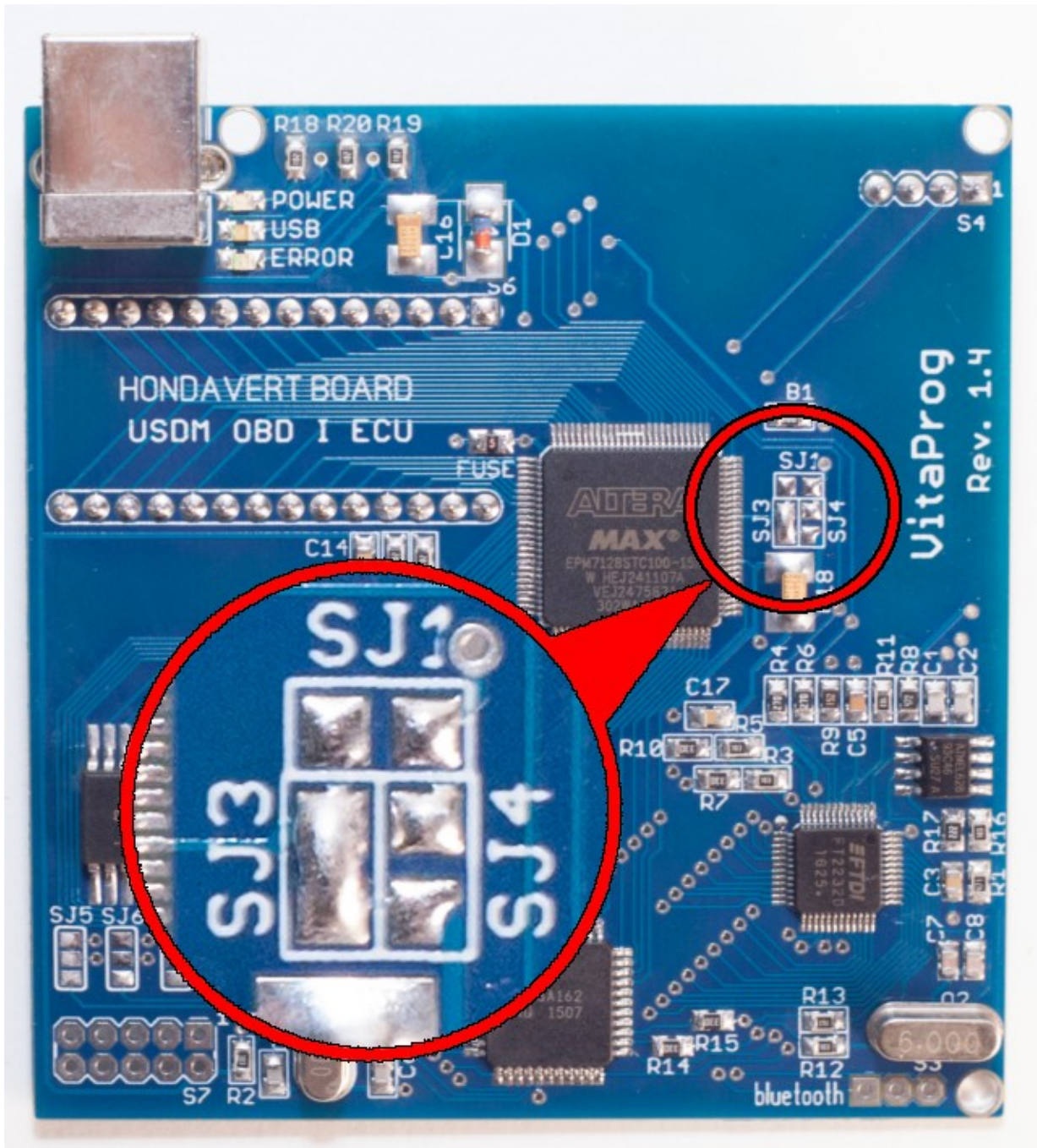
6. Done! Proceed to installing and configuring CROME (Read "Setup CROME Program" instruction).

Switch S300 to SManager mode

S300 Board must be located in the ECU

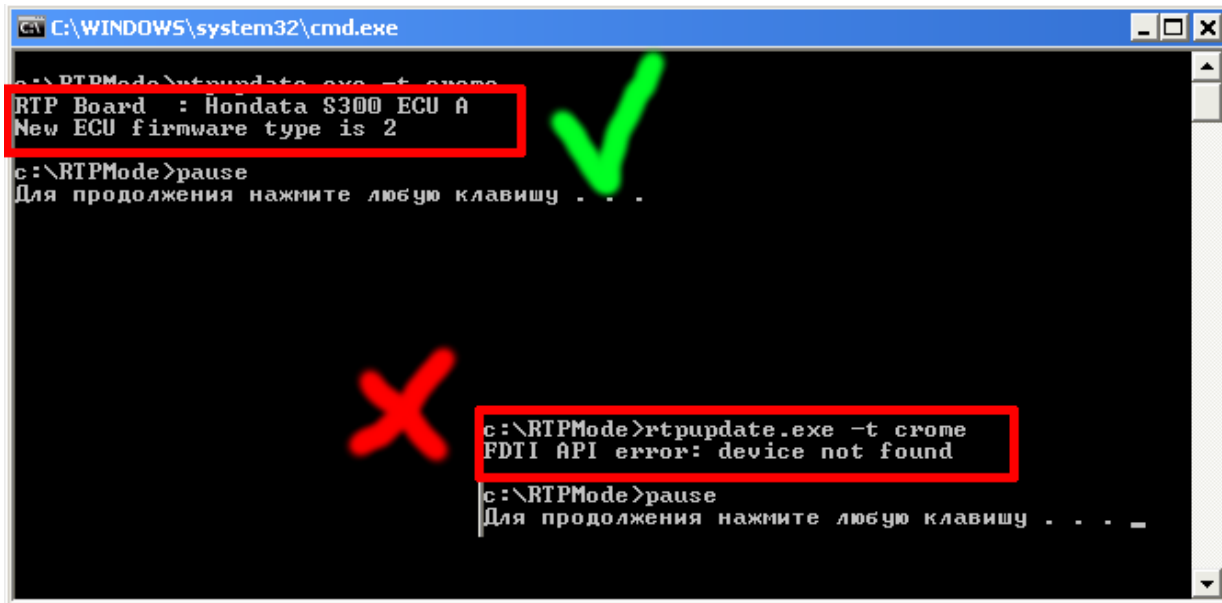
Attention! SManager mode is enabled by default when a new board is purchased These manipulations are necessary only if you early switched S300 board to CROME mode (SJ4 jumper is soldered)

1. Disconnect power from the ECU. Disconnect USB cable from S300. Solder jumper SJ3 instead of SJ4 as shown on the picture (you can temporarily remove the board from ECU at this stage for convenience)



CHECK YOURSELF. SJ3 soldered! SJ1, SJ4 desoldered!

2. Close SManager and CROME, if they are running. Supply power to the ECU or turn ignition ON, if the ECU is installed on the vehicle.
3. Connect S300 board to the computer via USB. Waiting for 10 seconds to activate the drivers!
4. Download the RTPMode utility from www.holyguard.rus/300_en.html
5. Unpack it and run SetSManager.bat.



```
C:\WINDOWS\system32\cmd.exe
c:\RTPMode>rtupdate.exe -t crume
RTP Board : Hondata S300 ECU A
New ECU firmware type is 2
c:\RTPMode>pause
Для продолжения нажмите любую клавишу . . .

c:\RTPMode>rtupdate.exe -t crome
FDTI API error: device not found
c:\RTPMode>pause
Для продолжения нажмите любую клавишу . . .
```

CAREFULLY check that the board is determined as on the picture. If not, you have a problem with the USB cable or jumpers soldered incorrectly!

6. Done! Run SManager and have a fun ;)