

Hondavert S300 Software installation

WARNING! Before you start. Please understand ONE simple thing. **Hondavert S300** is **NOT a fake copy/counterfit/replica** of Hondata S300 Board. It is own development Board with **COMPATIBILITY** of Hondata SManager software. Yes it's has full compatibility with Hondata S300 V2 hardware, but she has other functionality that Hondata does not (for example — our board work as an OSTRICH emulator + CROME Datalogger via ONE USB port. Yes, You can also use our board as a standalone OSTRICH for nonHonda ECU).

Understanding this simple thing, we come to the understanding that our board is NOT Compatible with new versions of Hondata SManager software from Hondata's web site.

To make our board compatible with new versions of Hondata's software, we will have to crack the Hondata S300 board, but we respect intellectual property and we will not do it.

So please use the software ONLY from this CD or from www.holyguard.ru site. All versions on this sources are TESTED and STABLE.

With best regards, Hondavert TEAM!

Hondata SManager compatibility mode (Set by default)

- If you **not use** Hondata's Traction Control unit, Please USE ONLY **2.2.8** version of Smanager. It's a most STABLE version of all. **Do not forget to disable automatic updates. See instrution below.**
- If you **use** Hondata's Traction Control unit, Please USE ONLY **2.3.7** version of Smanager. **Do not forget to disable automatic updates. See instrution below.**

All two versions of installation aviable on CD or on www.holyguard.ru website.

CROME compatibility mode (Read «SetMode» instruction)

- You can use CROME from oficial website, from CD or from www.holyguard.ru website

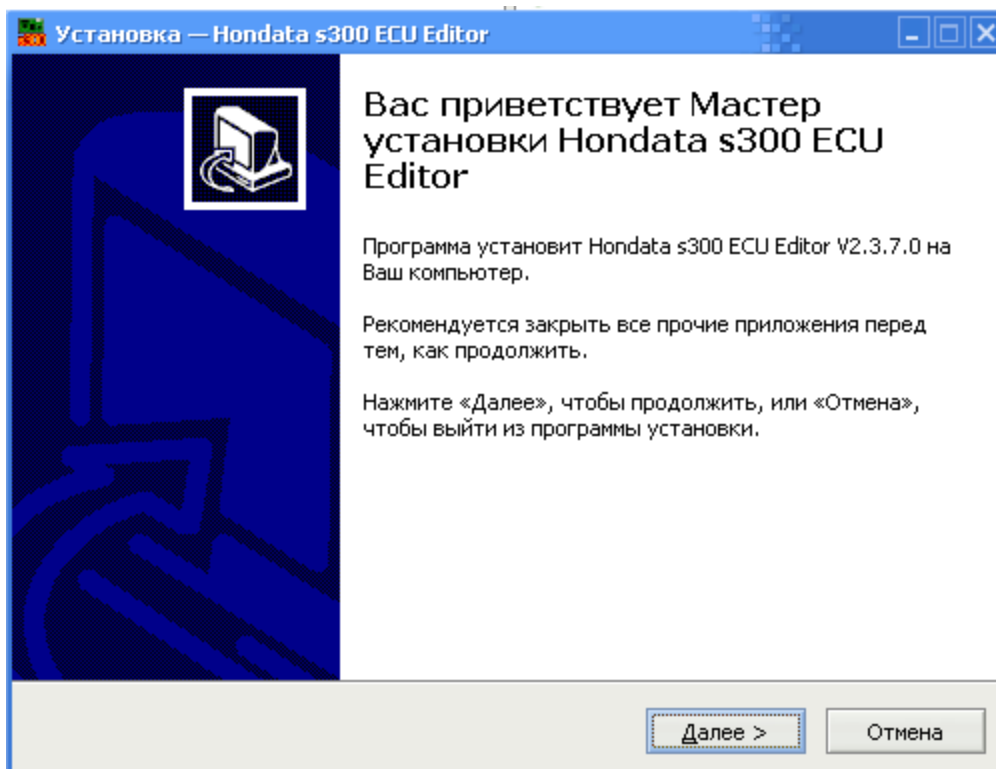
S300 SManager STEP BY STEP installation

Before you start.

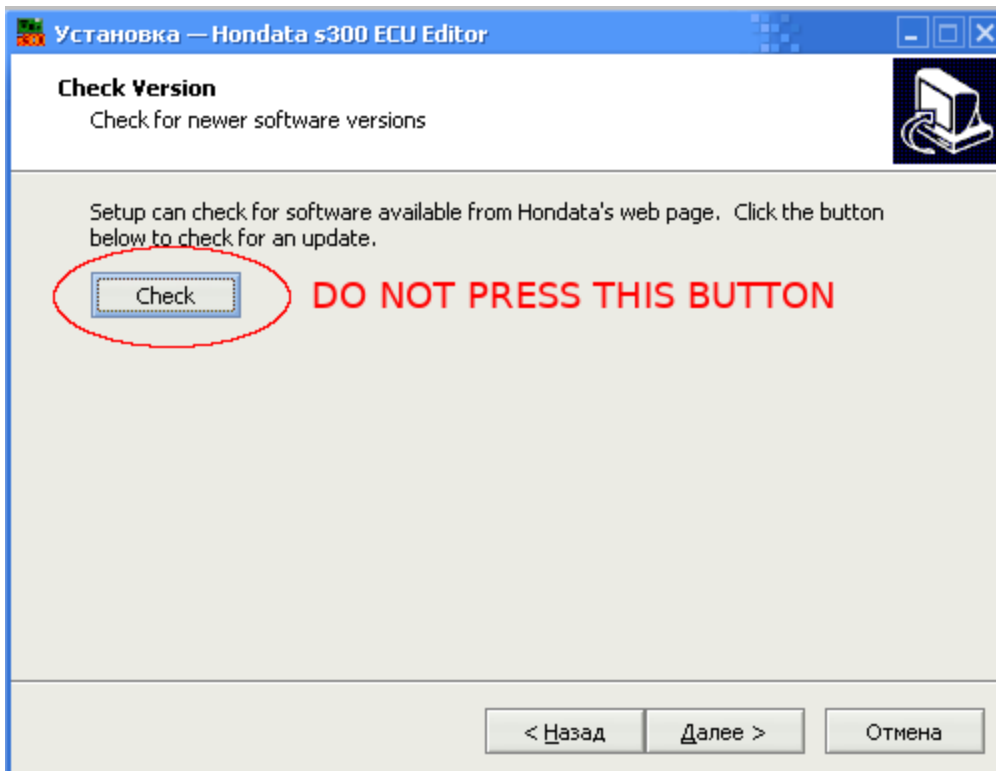
- **TURN OFF internet connection.**

- **Disconnect S300 Board from USB (if you already connected)**

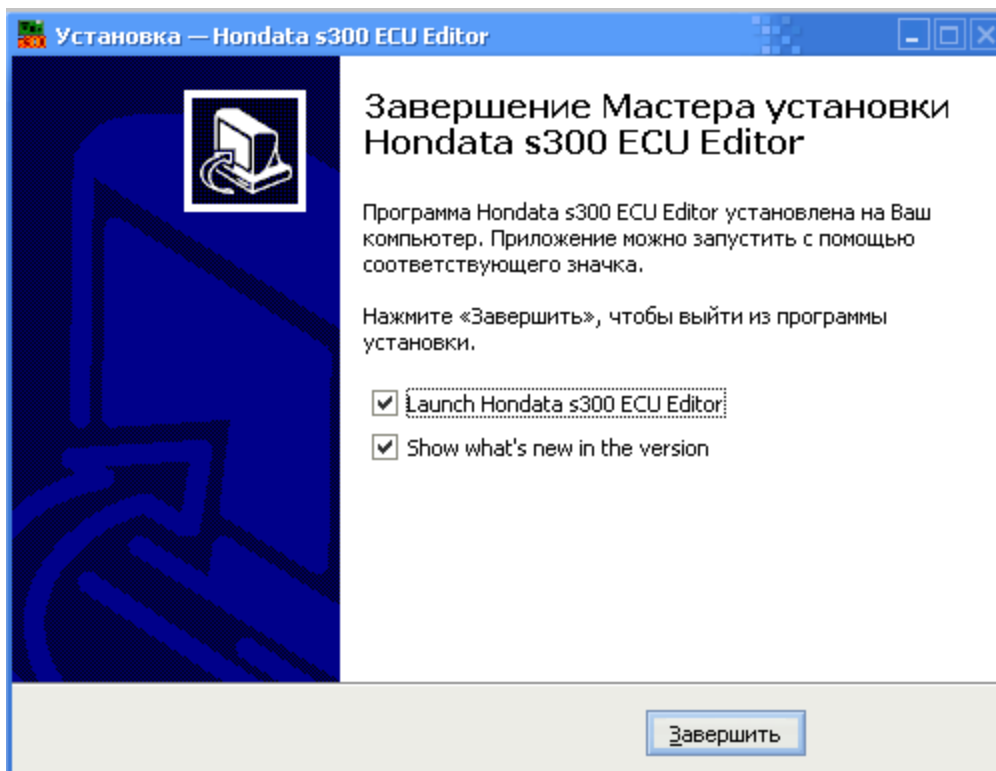
1. Run SManager **2.2.8** or **2.3.7** installation from CD or www.holyguard.ru website.



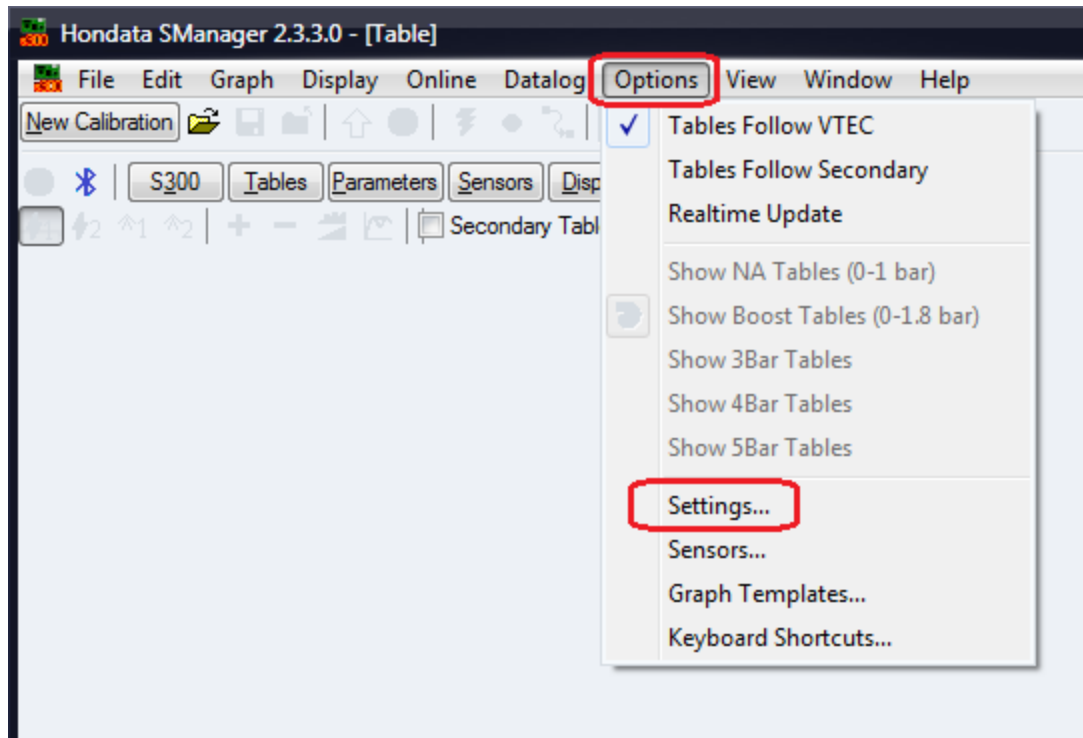
2. On «Check Version» Step **DO NOT** Press the «Check» button.



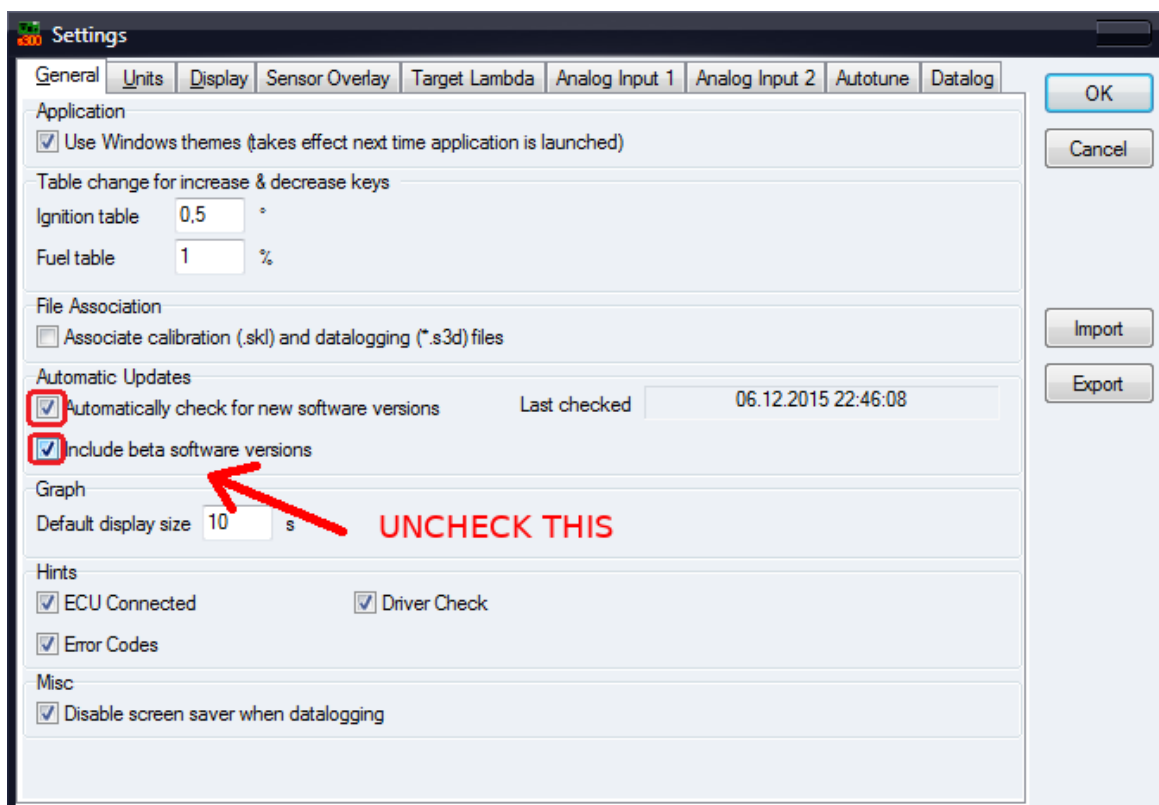
3. Process all other installation process as usual. Finish the installation and run Smanager.



4. In Smanager go to «Options» - «Settings...»



5. Disable «Automatically check for new software version» and press OK.



DONE!

Now You may turn ON Internet connection and connect Hondavert S300 Board.

S300 CROME STEP BY STEP installation

Before you start.

Disconnect S300 Board from USB (if you already connected)

1. CROME software DO NOT NEED any tricks. Install it as usually from any available source.
2. To Setup CROME compatibility mode, you need to install some drivers. please read «SetMode» instruction.